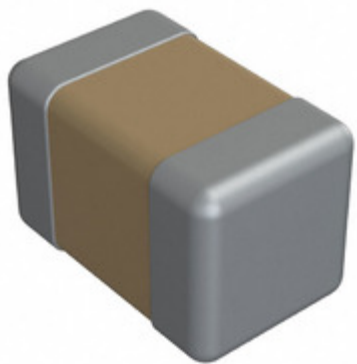


0805Y0630390GCT



Part Number: [0805Y0630390GCT](#)
Manufacturer: [Knowles Syfer](#)
Description: CAP CER 39PF 63V C0G/NP0 0805
Data sheet: [MLCC Capacitor Datasheet](#)
[MLCC Catalog](#)

RoHS Status: Lead free / RoHS Compliant
Ship From: Hong Kong
Shipment Way: DHL/Fedex/TNT/UPS/EMS

Images are for reference only.
 See Product Specifications for product details.
 Buy **0805Y0630390GCT** with confidence from
 Component-World.HK, 1 Year Warranty

[Request For Quotation](#)

PRODUCT PARAMETER

Part Number	0805Y0630390GCT	Manufacturer	Knowles Syfer
Description	CAP CER 39PF 63V C0G/NP0 0805	Lead Free Status / RoHS Status	Lead free / RoHS Compliant
Quantity Available	235736 pcs	Data sheet	MLCC Capacitor Datasheet MLCC Catalog
Category	Capacitors	Voltage - Rated	63V
Tolerance	±2%	Thickness (Max)	0.051" (1.30mm)
Temperature Coefficient	C0G, NP0 (1B)	Size / Dimension	0.079" L x 0.049" W (2.00mm x 1.25mm)
Series	FlexiCap™	Ratings	-
Packaging	Tape & Reel (TR)	Package / Case	0805 (2012 Metric)
Operating Temperature	-55°C ~ 125°C	Mounting Type	Surface Mount, MLCC
Moisture Sensitivity Level (MSL)	1 (Unlimited)	Manufacturer Standard Lead Time	8 Weeks
Lead Spacing	-	Lead Free Status / RoHS Status	Lead free / RoHS Compliant
Height - Seated (Max)	-	Features	Soft Termination
Failure Rate	-	Detailed Description	39pF ±2% 63V Ceramic Capacitor C0G, NP0 (1B) 0805 (2012 Metric)
Capacitance	39pF	Applications	Boardflex Sensitive

Component-World.com is a Reliable Stocking Distributor of Electronic Components. We specialize in all Knowles Syfer series electronic components. We have 235736 pieces of Knowles Syfer 0805Y0630390GCT in stock available now. Request a quote from electronics components distributor at Component-World.com, our sales team will contact you within 24 hours.
 RFQ Email: info@Components-World.com

RELATED PRODUCTS

	Part#: 0805Y0630390FCR Description: CAP CER 39PF 63V C0G/NP0 0805	Manufacturers: Knowles Syfer	RFQ
	Part#: 0805Y0630390JCT Description: CAP CER 39PF 63V C0G/NP0 0805	Manufacturers: Knowles Syfer	RFQ
	Part#: 0805Y0630390JQT Description: CAP CER 39PF 63V C0G/NP0 0805	Manufacturers: Knowles Syfer	RFQ
	Part#: 0805Y0630390GAT Description: CAP CER 39PF 63V C0G/NP0 0805	Manufacturers: Knowles Syfer	RFQ
	Part#: 0805Y0630390JAT Description: CAP CER 39PF 63V C0G/NP0 0805	Manufacturers: Knowles Syfer	RFQ
	Part#: 0805Y0630390JFR Description: CAP CER 39PF 63V C0G/NP0 0805	Manufacturers: Knowles Syfer	RFQ
	Part#: 0805Y0630390FFT Description: CAP CER 39PF 63V C0G/NP0 0805	Manufacturers: Knowles Syfer	RFQ
	Part#: 0805Y0630390FCT Description: CAP CER 39PF 63V C0G/NP0 0805	Manufacturers: Knowles Syfer	RFQ
	Part#: 0805Y0630390JAR Description: CAP CER 39PF 63V C0G/NP0 0805	Manufacturers: Knowles Syfer	RFQ
	Part#: 0805Y0630390GFR Description: CAP CER 39PF 63V C0G/NP0 0805	Manufacturers: Knowles Syfer	RFQ
	Part#: 0805Y0630390JFT Description: CAP CER 39PF 63V C0G/NP0 0805	Manufacturers: Knowles Syfer	RFQ
	Part#: 0805Y0630390FAT Description: CAP CER 0805	Manufacturers: Knowles Syfer	RFQ
	Part#: 0805Y0630390GAR Description: CAP CER 39PF 63V C0G/NP0 0805	Manufacturers: Knowles Syfer	RFQ
	Part#: 0805Y0630390GFT Description: CAP CER 39PF 63V C0G/NP0 0805	Manufacturers: Knowles Syfer	RFQ
	Part#: 0805Y0630390FFR Description: CAP CER 39PF 63V C0G/NP0 0805	Manufacturers: Knowles Syfer	RFQ
	Part#: 0805Y0630390JCR Description: CAP CER 39PF 63V C0G/NP0 0805	Manufacturers: Knowles Syfer	RFQ
	Part#: 0805Y0630390GCR Description: CAP CER 39PF 63V C0G/NP0 0805	Manufacturers: Knowles Syfer	RFQ
	Part#: 0805Y0630390FAR Description: CAP CER 39PF 63V C0G/NP0 0805	Manufacturers: Knowles Syfer	RFQ
	Part#: 0805Y0630390FQT Description: CAP CER 39PF 63V C0G/NP0 0805	Manufacturers: Knowles Syfer	RFQ
	Part#: 0805Y0630390GQT Description: CAP CER 39PF 63V C0G/NP0 0805	Manufacturers: Knowles Syfer	RFQ

Related keywords for 0805Y0630390GCT

Knowles Syfer 0805Y0630390GCT	0805Y0630390GCT distributor	0805Y0630390GCT supplier	0805Y0630390GCT price
0805Y0630390GCT download datasheet	0805Y0630390GCT datasheet	0805Y0630390GCT stock	buy 0805Y0630390GCT
Knowles Syfer 0805Y0630390GCT	Syfer 0805Y0630390GCT		